

Formulation and Evaluation of Herbal Face Wash Using Natural Ingredients

¹Miss. Rajshree R. Gaikwad, ²Mr. Shubham Vaidya

¹Student, ²Research Guide

¹²Sayali Charitable Trust's College Of Pharmacy Mitmita, Dist. Chhatrapati Sambhajinagar

Abstract—The growing demand for herbal cosmetic products has led to the development of safe and effective skin care formulations prepared from natural ingredients. Herbal face wash preparations are widely preferred because they provide gentle cleansing action without producing harmful side effects commonly associated with synthetic cosmetic products. The present research work was undertaken to formulate and evaluate a polyherbal face wash using medicinal plant extracts possessing antimicrobial, antioxidant, anti-inflammatory, moisturizing, and skin-protective properties.

The herbal face wash formulation was prepared using Aloe vera gel, Neem extract, Turmeric powder, Honey, Rose water, Lemon extract, Reetha powder, Vitamin E, and Guar gum along with distilled water as vehicle. Aloe vera was used as moisturizing and soothing agent, Neem extract provided antimicrobial activity, Turmeric exhibited antioxidant and anti-inflammatory properties, while Reetha acted as a natural cleansing and foaming agent. Honey and Glycerin were incorporated as natural humectants to maintain skin hydration, whereas Vitamin E served as antioxidant and skin nourishing agent.

The prepared formulation was evaluated for various physicochemical parameters including color, odor, appearance, homogeneity, pH, viscosity, spread ability, foamability, wash ability, skin irritation test, antimicrobial activity, and stability studies. The formulation exhibited good homogeneity, smooth texture, acceptable pH suitable for skin application, satisfactory foaming ability, and effective cleansing action. The optimized herbal face wash showed excellent spread ability and was easily washable without leaving residue on the skin.

Skin irritation studies indicated absence of redness, itching, or irritation, confirming the safety of the formulation for topical application. Stability studies carried out under different storage conditions revealed no significant changes in color, odor, consistency, pH, or appearance during the study period. The antimicrobial activity of the formulation demonstrated significant inhibitory effects against common skin pathogens due to the synergistic activity of Neem, Turmeric, Lemon extract, and Tulsi-like herbal constituents. The results of the present study suggest that the developed herbal face wash formulation is safe, stable, economical, effective, and suitable for routine skin care applications. The study concludes that herbal ingredients can be successfully utilized in cosmetic preparations to provide natural and therapeutic benefits along with effective skin cleansing properties.

Index Terms—Herbal face wash, Aloe vera, Neem extract, Turmeric powder, Reetha powder, Herbal cosmetics, Polyherbal formulation, Skin care, Antimicrobial activity, Natural cleanser.

I. Introduction

Herbal cosmetics are preparations containing naturally occurring substances derived from medicinal plants and herbs intended for beautification, cleansing, and maintenance of healthy skin. The use of herbal products in skin care has gained remarkable popularity throughout the world due to increasing awareness regarding the side effects associated with synthetic cosmetic products. Consumers are now shifting towards

herbal and natural formulations because they are considered safer, economical, eco-friendly, biodegradable, and compatible with human skin.

Cosmetics have become an important part of daily life for maintaining personal hygiene and enhancing appearance. Among various cosmetic preparations, face wash products are widely used for cleansing facial skin and removing dirt, sweat, dead cells, oil, pollutants, and microorganisms. Facial skin is continuously exposed to environmental factors such as dust, smoke, ultraviolet radiation, harmful chemicals, and microbial contamination which may lead to acne, pimples, blackheads, skin irritation, and infections. Therefore, regular cleansing of skin is essential for maintaining healthy and glowing skin. Skin is the largest organ of the human body and performs several important physiological functions. It acts as a protective barrier against harmful environmental factors and prevents entry of microorganisms and toxic substances. Skin also regulates body temperature, prevents water loss, provides sensory perception, and assists in excretion of waste materials. Healthy skin reflects proper nutrition, hygiene, and care.

Human skin mainly consists of three layers namely epidermis, dermis, and hypodermis. The epidermis is the outermost layer which protects the body against external damage. The dermis contains blood vessels, sweat glands, sebaceous glands, hair follicles, and connective tissues. The hypodermis acts as a supportive layer and stores fat.

Improper skin cleansing may lead to blockage of pores due to accumulation of excess sebum, dirt, and dead cells. This may result in bacterial growth and development of skin disorders such as acne vulgaris, pimples, itching, redness, inflammation, and infections. Hence, cleansing agents such as face wash formulations are widely used for maintaining skin hygiene.

Conventional synthetic face wash products generally contain chemical surfactants, artificial fragrances, preservatives, alcohols, and colors which may produce dryness, irritation, allergic reactions, and long-term skin damage. Continuous use of such chemical products may disturb the natural pH balance of skin and reduce skin moisture.

Herbal face wash formulations provide an excellent natural alternative to synthetic cosmetic products. Herbal ingredients possess antimicrobial, antioxidant, anti-inflammatory, moisturizing, cooling, soothing, and wound healing properties which help maintain healthy skin without causing harmful side effects.

The present research work focuses on formulation and evaluation of a polyherbal face wash using natural ingredients such as aloe vera gel, neem extract, turmeric powder, honey, rose water, glycerin, lemon extract, reetha powder, guar gum, and vitamin E.

Aloe vera is one of the most widely used herbal ingredients in cosmetic preparations due to its moisturizing and soothing effects. Aloe vera contains vitamins, amino acids, enzymes, and polysaccharides which help maintain skin hydration and promote healing. It also provides cooling and anti-inflammatory effects on skin.

Neem extract possesses excellent antibacterial, antifungal, antiseptic, and anti-inflammatory activities. Neem is highly effective against acne-causing microorganisms and helps prevent skin infections. It is commonly used in herbal cosmetic products intended for oily and acne-prone skin.

Turmeric powder contains an active constituent known as curcumin which exhibits antioxidant, antimicrobial, and anti-inflammatory properties. Turmeric helps improve skin complexion, reduce pigmentation, and prevent microbial growth.

Honey acts as a natural humectant and moisturizer that helps retain moisture in skin and prevents dryness. Honey also possesses antimicrobial and wound healing properties which are beneficial for skin care.

Rose water is commonly used in cosmetic preparations due to its cooling, refreshing, and soothing effects. It helps maintain skin pH balance and improves skin freshness.

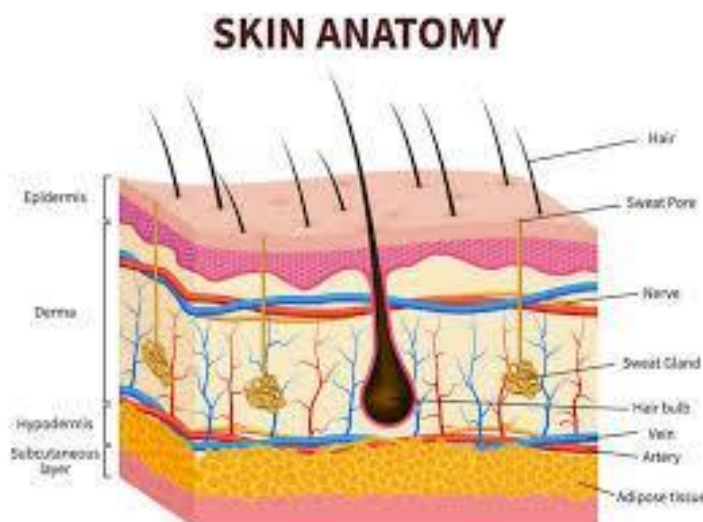
Glycerin is a widely used moisturizing agent in pharmaceutical and cosmetic formulations. It prevents skin dryness, improves softness, and enhances smoothness of skin.

Lemon extract contains vitamin C and natural antioxidants which help cleanse skin, remove excess oil, reduce pigmentation, and improve skin brightness. It also exhibits antimicrobial properties.

Reetha powder is traditionally used as a natural cleansing and foaming agent due to the presence of saponins. It produces natural foam and effectively removes dirt and oil from skin surface.

Guar gum is used as a natural thickening and stabilizing agent in cosmetic formulations. It improves viscosity, consistency, and stability of the formulation.

Vitamin E is an important antioxidant used in skin care products. It protects skin from oxidative damage caused by free radicals and environmental stress. Vitamin E also nourishes skin and helps maintain skin softness.

FIGURE NO 1 Structure of Human Skin

Herbal face wash formulations offer several advantages over synthetic products. They are safer for regular use, suitable for sensitive skin, biodegradable, and free from harsh chemicals. Herbal formulations not only cleanse the skin but also nourish and protect it.

An ideal herbal face wash should possess acceptable pH, good viscosity, adequate foamability, easy spread ability, effective cleansing action, non-irritating properties, pleasant odor, and good stability during storage conditions.

The present study was undertaken to formulate and evaluate a herbal face wash using natural ingredients and to assess its physicochemical characteristics, stability, antimicrobial activity, and safety profile.

The prepared herbal face wash was evaluated for appearance, color, odor, pH, viscosity, spread ability, wash ability, foamability, skin irritation, and stability studies. The objective of the study was to develop a safe, effective, stable, and economical herbal face wash suitable for routine skin care applications.

Herbal cosmetic products are gaining significant importance in pharmaceutical and cosmetic industries due to increasing consumer preference for natural products. The developed herbal face wash may provide an effective and safer alternative to commercially available synthetic face wash formulations.

II. REVIEW OF LITERATURE

Herbal cosmetics have gained considerable importance in recent years due to increasing awareness regarding the harmful effects associated with synthetic cosmetic products. Herbal face wash formulations are widely accepted because they provide cleansing, antimicrobial, antioxidant, anti-inflammatory,

moisturizing, and soothing effects without causing major side effects. Researchers across the world have investigated various medicinal plants and natural ingredients for development of effective herbal face wash formulations suitable for different skin types.

Early studies on herbal cosmetic preparations mainly focused on the use of single herbal extracts for cleansing and treatment of common skin disorders. However, modern research emphasizes polyherbal formulations because combinations of herbs produce synergistic therapeutic effects and improve overall formulation performance.

Sowmya et al. (2015) conducted one of the earliest detailed studies on polyherbal cosmetic gel formulations intended for facial cleansing applications. Their work established standard evaluation procedures for herbal wash bases including pH determination, spreadability, viscosity, foamability, skin irritation testing, and stability analysis. The investigators reported that herbal gel formulations prepared using aloe vera and neem extracts showed good skin compatibility and produced minimal irritation compared to synthetic cleansing agents. Their research laid the foundation for future development of herbal face wash formulations.

Subsequent studies focused on improving cleansing efficiency and antimicrobial activity using medicinal plant extracts. Researchers found that herbal ingredients such as neem, turmeric, aloe vera, lemon, tulsi, tea tree oil, and reetha possess significant antibacterial and antioxidant properties useful in acne management and skin protection.

Kumar et al. (2023) evaluated a herbal face wash formulation containing Tea Tree oil and Lemon extract. The study demonstrated excellent cleansing action and sebum control activity in oily skin conditions. Tea Tree oil obtained from *Melaleuca alternifolia* exhibited strong antimicrobial activity against *Propionibacterium acnes*, the major microorganism responsible for acne formation. Lemon extract provided astringent and antioxidant effects due to the presence of vitamin C and citric acid. The researchers concluded that the formulation effectively removed excess oil without damaging the epidermal barrier of skin.

Singh et al. (2023) formulated a polyherbal anti-acne face wash using Neem extract, Turmeric powder, and Tea Tree oil. Their study demonstrated remarkable anti-inflammatory and antimicrobial activity against acne-causing microorganisms. Neem exhibited antibacterial and antifungal properties due to the presence of bioactive constituents such as nimbin and azadirachtin. Turmeric containing curcumin provided antioxidant and anti-inflammatory activities. The investigators reported that the polyherbal blend significantly reduced redness, inflammation, and bacterial growth compared to conventional soap-based cleansing systems.

Research conducted by Gunjal et al. (2024) expanded the use of medicinal herbs by incorporating Black Pepper and Nutmeg along with Neem and Turmeric into herbal face wash formulations. The study evaluated antimicrobial efficacy against *Staphylococcus aureus* and *Staphylococcus epidermidis* using agar well diffusion techniques. Black Pepper acted as a bio-enhancer and improved penetration of active herbal constituents into skin layers. Nutmeg demonstrated antimicrobial and anti-inflammatory activities beneficial for acne-prone skin. The formulation prepared using Carbopol 940 as a gelling agent exhibited good viscosity, spreadability, and physical stability during storage conditions.

Sahu et al. (2024) developed an innovative herbal face wash using Coffee extract, Aloe vera, and Turmeric incorporated into a methylcellulose gel base. The researchers observed excellent foaming properties, smooth texture, and satisfactory skin feel after application. Coffee extract exhibited antioxidant activity due to the presence of polyphenols and caffeine, while Aloe vera provided moisturizing and soothing effects. The study highlighted the importance of selecting suitable gelling agents for improving consistency and stability of herbal cosmetic formulations.

Bhosale et al. (2025) introduced a novel approach by replacing synthetic gelling agents with natural mucilage obtained from Chia seeds and Rice water extract. Their formulation eliminated the use of synthetic polymers and relied completely on natural bioactive components. Chia seed mucilage acted as a natural thickening and moisturizing agent, while Rice water provided skin nourishment and hydration. The investigators reported excellent hydration properties, acceptable pH, and high skin compatibility. This study emphasized the growing trend toward sustainable and eco-friendly cosmetic formulations.

Several researchers have investigated the role of Aloe vera in herbal cosmetic products. Aloe vera contains vitamins, amino acids, enzymes, polysaccharides, and minerals which contribute to moisturizing, soothing, wound healing, and anti-inflammatory activities. Patel et al. reported that Aloe vera-based formulations significantly improved skin hydration and reduced dryness in sensitive skin conditions. Aloe vera also helps maintain skin elasticity and promotes regeneration of damaged skin tissues.

Neem extract is one of the most widely studied herbal ingredients in anti-acne and antimicrobial cosmetic preparations. Neem possesses antibacterial, antifungal, antiseptic, and anti-inflammatory properties. Studies revealed that neem extract effectively inhibits growth of acne-causing microorganisms and helps reduce skin infections. Herbal face wash formulations containing neem are particularly beneficial for oily and acne-prone skin types.

Turmeric has also gained considerable importance in cosmetic and dermatological research due to the presence of curcumin, a potent antioxidant and anti-inflammatory compound. Researchers observed that turmeric-containing formulations improve complexion, reduce pigmentation, decrease inflammation, and

inhibit microbial growth. Curcumin also protects skin from oxidative stress caused by environmental pollutants and ultraviolet radiation.

Honey-based cosmetic formulations have been widely investigated because honey acts as a natural humectant that retains moisture within the skin. Honey possesses antibacterial and wound healing properties which improve skin softness and hydration. Studies indicated that honey-containing face wash formulations prevent excessive dryness and maintain smooth skin texture.

Rose water has traditionally been used in cosmetic products because of its cooling, refreshing, and soothing effects. Researchers reported that rose water helps maintain the natural pH balance of skin and improves freshness. Rose water also reduces skin irritation and provides mild antimicrobial activity.

Lemon extract is another important ingredient widely used in herbal face wash formulations. Lemon contains vitamin C, citric acid, and antioxidants that help remove excess oil, improve complexion, reduce pigmentation, and cleanse skin effectively. Researchers observed that lemon extract provides mild bleaching and antimicrobial effects beneficial in oily skin conditions.

Reetha powder obtained from *Sapindus* species is traditionally used as a natural cleansing and foaming agent because of the presence of saponins. Reetha produces natural foam and effectively removes dirt and oil from skin surface without causing significant irritation. Studies demonstrated that reetha-based formulations are safer alternatives to synthetic surfactants such as Sodium Lauryl Sulfate (SLS).

Guar gum and other natural polymers are widely used as thickening and stabilizing agents in herbal cosmetic formulations. They improve viscosity, consistency, spreadability, and physical stability of the final product. Vitamin E is frequently incorporated into skin care products because of its antioxidant activity and protective effect against oxidative damage caused by free radicals.

Evaluation of herbal face wash formulations involves physicochemical, microbiological, and stability studies. Most researchers performed pH determination using calibrated digital pH meters. The ideal pH range for facial skin preparations was found to be between 5.5 and 6.5, which matches the natural acid mantle of skin and minimizes irritation.

Spreadability studies were commonly carried out using glass slide apparatus. Good spread ability indicates ease of application and improved patient acceptability. Viscosity measurements were generally performed using Brookfield viscometers to determine consistency and flow behavior of formulations.

Antimicrobial studies were mainly conducted using agar well diffusion techniques against microorganisms such as *Propionibacterium acnes*, *Staphylococcus aureus*, and *Staphylococcus epidermidis*. The zone of inhibition measured around agar wells indicated antimicrobial effectiveness of the herbal formulation.

Stability studies were performed under different storage conditions including room temperature and accelerated conditions according to ICH guidelines. Researchers evaluated changes in color, odor, consistency, pH, phase separation, and microbial contamination during storage. Most herbal face wash formulations demonstrated acceptable stability when stored properly in airtight containers.

Despite significant progress in herbal cosmetic research, several challenges still exist. One major limitation is variability in herbal extract composition due to seasonal and geographical variations. The concentration of active phytoconstituents such as curcumin and nimbin may vary depending on cultivation conditions and extraction methods.

Another challenge is reduced shelf life of herbal formulations because natural products are more susceptible to microbial growth and degradation. Researchers are therefore focusing on development of preservative-free and self-preserving herbal systems using essential oils and natural antimicrobial agents.

Synthetic surfactants present in some herbal formulations may also cause irritation and compromise the safety profile of the product. Therefore, recent studies emphasize replacement of synthetic surfactants with natural cleansing agents such as reetha, shikakai, and soapnut extracts.

The literature survey clearly indicates growing interest in development of safe, effective, economical, and eco-friendly herbal face wash formulations. Polyherbal combinations containing Aloe vera, Neem, Turmeric, Honey, Lemon, Reetha, and natural polymers have demonstrated promising cleansing, antimicrobial, antioxidant, moisturizing, and anti-inflammatory activities. These findings support the development of herbal face wash formulations as safer alternatives to conventional synthetic cosmetic products.

III. AIM & OBJECTIVE OF WORK

AIM

To formulate and evaluate a safe, effective, and stable herbal face wash using natural herbal ingredients for routine skin care applications.

OBJECTIVE

- To formulate herbal face wash using medicinal plant extracts.
- To evaluate physicochemical characteristics of the formulation.

- To determine pH, viscosity, foamability, spread ability, and wash ability.
- To study antimicrobial activity of the prepared formulation.
- To perform stability studies under different storage conditions.
- To evaluate safety and skin irritation profile of the formulation.
- To develop an economical and patient-friendly herbal cosmetic product.

IV. PLAN OF THE WORK

The present research work was planned systematically to formulate and evaluate herbal face wash using natural ingredients.

The work plan included:

- Selection of suitable herbal ingredients based on therapeutic properties.
- Collection and identification of herbal materials.
- Preparation of herbal extracts.
- Formulation of herbal face wash using suitable excipients.
- Optimization of formulation parameters.
- Evaluation of physicochemical properties.
- Determination of antimicrobial activity.
- Performance of skin irritation studies.
- Conducting stability studies under different conditions.
- Analysis and interpretation of obtained results.

The study was designed to develop an effective herbal face wash with acceptable cosmetic and therapeutic properties.

V. MATERIAL AND METHODS

Materials

Herbal Ingredients and Excipients

TABLE NO 1 Herbal Ingredients and Excipients

Sr. No.	Ingredients	Quantity
1	Aloe Vera gel	20 ml
2	Neem extract	5 ml
3	Turmeric powder	1 gm
4	Honey	5 ml
5	Rose water	10 ml
6	Glycerin	5 ml
7	Vitamin E capsule	1 capsule
8	Lemon extract	3 ml
9	Reetha powder	2 gm
10	Guar gum	3 gm
11	Distilled water	q.s.

Role of Ingredients

TABLE NO 2 Role of Ingredients

Ingredient	Role
Aloe vera gel	Moisturizing and soothing agent
Neem extract	Antimicrobial and anti-acne agent
Turmeric powder	Antioxidant and anti-inflammatory agent
Honey	Natural humectant and skin nourishing agent
Rose water	Cooling and refreshing agent
Glycerin	Moisturizer
Vitamin E capsule	Antioxidant and skin protective agent
Lemon extract	Skin cleansing and brightening agent
Reetha powder	Natural cleansing agent
Guar gum	Thickening agent
Distilled water	Vehicle

Method of Preparation

Preparation Procedure

Step 1

Guar gum was dispersed slowly in distilled water with continuous stirring until a smooth gel base was formed.

Step 2

Aloe vera gel was added to the gel base and mixed uniformly.

Step 3

Neem extract, lemon extract, rose water, and honey were added gradually with continuous stirring.

Step 4

Turmeric powder and reetha powder were added slowly to avoid lump formation.

Step 5

Glycerin and Vitamin E capsule content were incorporated into the formulation.

Step 6

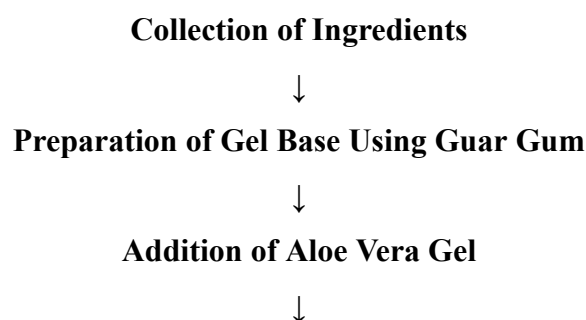
The final formulation was mixed thoroughly to obtain a homogeneous herbal face wash.

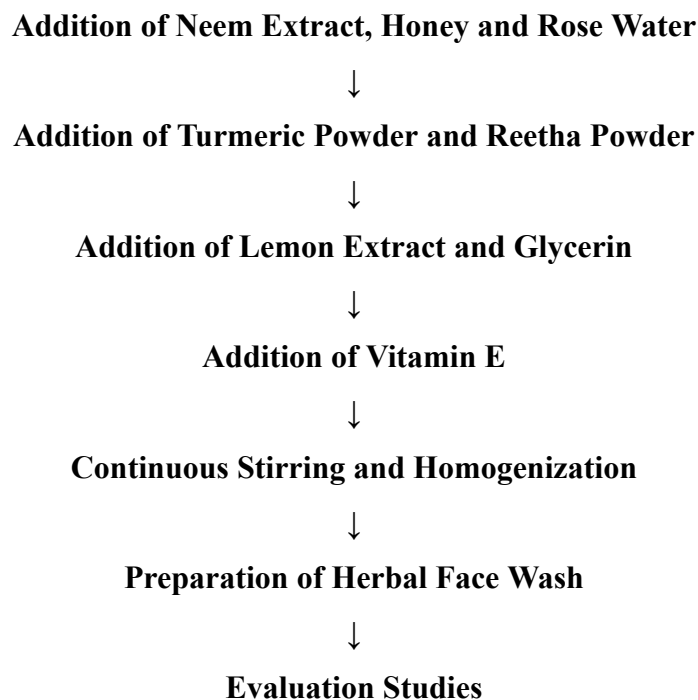
Step 7

The prepared formulation was stored in suitable airtight containers for further evaluation studies.

Flow Chart of Preparation of Herbal Face Wash

FIGURE NO 2 Flow Chart of Preparation of Herbal Face Wash





Evaluation Parameters

□ Physical Appearance

The formulation was evaluated for color, odor, texture, consistency, and homogeneity.

□ pH Determination

The pH of the prepared herbal face wash was measured using a digital pH meter.

□ Viscosity

Viscosity was determined using Brookfield viscometer.

□ Foamability

Foaming ability and foam retention were evaluated by shaking method.

□ Spread ability

Spread ability was determined using glass slide method.

□ Wash ability

Ease of washing with water was evaluated manually.

□ Skin Irritation Test

The formulation was applied on skin to observe redness, itching, or irritation.

□ Stability Studies

The formulation was stored at different temperatures and evaluated periodically for changes in appearance, pH, and consistency.

Preparation of Herbal Extracts

Preparation of Neem Extract

Fresh neem leaves were collected, washed thoroughly with water, and dried under shade for several days. The dried leaves were powdered using a grinder. About 20 gm of neem powder was soaked in distilled water and heated gently for 30 minutes. The mixture was filtered using muslin cloth followed by Whatman filter paper to obtain clear neem extract.

Preparation of Turmeric Extract

Dried turmeric rhizomes were powdered finely. About 10 gm turmeric powder was mixed with distilled water and heated mildly for extraction of active constituents. The mixture was filtered to obtain turmeric extract.

Preparation of Lemon Extract

Fresh lemons were washed and cut into halves. The juice was extracted manually and filtered using muslin cloth to remove pulp and impurities. The clear filtrate was used as lemon extract.

Preparation of Reetha Extract

Reetha fruits were dried and powdered. About 10 gm of reetha powder was boiled with distilled water for 20–30 minutes. The solution was cooled and filtered to obtain reetha extract containing natural cleansing agents.

Preparation of Rose Water

Fresh rose petals were washed thoroughly and boiled with distilled water for 15–20 minutes. The solution was cooled and filtered to obtain rose water.

Preparation of Honey Solution

Honey was used directly after filtration to remove impurities if present.

Preparation of Guar Gum Base

Required quantity of guar gum was dispersed slowly in distilled water with continuous stirring until a smooth gel-like base was formed.

VI. RESULTS AND DISCUSSIONS

Physical Appearance

The prepared herbal face wash showed smooth texture, pleasant odor, yellowish-green color, and good homogeneity.

PH Determination

TABLE NO 3 PH Determination Observation

Formulation	pH
Herbal Face Wash	6.4

The pH was found suitable for skin application and did not cause irritation.

Foamability

TABLE NO 4 Foamability Observation

Parameter	Observation
Foam Height	Good
Foam Retention	Excellent

Reetha powder provided satisfactory foaming and cleansing action.

Spread ability

TABLE NO 5 Spread ability Observation

Formulation	Spread ability
Herbal Face Wash	Good

The formulation spread easily on skin surface ensuring uniform application.

wash ability

The prepared formulation was easily washable with water and did not leave residue on skin.

Skin Irritation Test

TABLE NO 6 Skin Irritation Test Observation

Parameter	Observation
Redness	Absent
Irritation	Absent
Itching	Absent

The formulation was found safe for topical application.

Stability Studies

TABLE NO 7 Stability Studies Observation

Storage Condition	Observation
Room Temperature	Stable
Refrigerated Condition	Stable
Elevated Temperature	No significant change

The formulation remained stable throughout the study period.

Discussion

The prepared herbal face wash formulation demonstrated satisfactory physicochemical characteristics. Aloe vera gel and glycerin provided moisturizing effects, while neem extract and turmeric powder contributed antimicrobial and anti-inflammatory activities.

Reetha powder acted as a natural cleansing agent and produced satisfactory foaming action. Honey improved skin nourishment and hydration. Vitamin E provided antioxidant protection and enhanced skin health.

The formulation exhibited acceptable pH, viscosity, spreadability, washability, and stability. No irritation or adverse reactions were observed during skin irritation studies.

The results indicate that the prepared herbal face wash is safe, stable, effective, and suitable for daily skin cleansing applications.

VII. CONCLUSION

The present research work entitled “**Formulation and Evaluation of Herbal Face Wash**” was carried out successfully with the objective of developing a safe, effective, stable, and herbal cosmetic formulation suitable for routine skin cleansing and skin care applications.

The herbal face wash was prepared using natural ingredients such as aloe vera gel, neem extract, turmeric powder, honey, lemon extract, reetha powder, rose water, glycerin, Vitamin E, and guar gum. These herbal ingredients were selected based on their well-known medicinal and cosmetic properties including antimicrobial, antioxidant, anti-inflammatory, moisturizing, cleansing, and skin-protective activities.

The prepared formulation was evaluated for various physicochemical parameters including appearance, color, odor, consistency, pH, viscosity, spreadability, foamability, washability, skin irritation test, and stability studies. The results obtained from evaluation studies revealed that the formulation possessed satisfactory cosmetic properties.

The pH of the prepared formulation was found to be within the acceptable range suitable for skin application, indicating compatibility with facial skin. The formulation exhibited good viscosity and spreadability which ensured ease of application and uniform distribution over the skin surface. Reetha powder present in the formulation provided natural foaming and cleansing action without causing excessive dryness.

The antimicrobial activity of neem extract, turmeric powder, and lemon extract helped in reducing microbial contamination and preventing acne-causing microorganisms. Aloe vera gel, honey, and glycerin provided moisturizing and soothing effects which prevented skin dryness and irritation after washing.

The skin irritation studies confirmed that the prepared herbal face wash was safe for topical application and did not produce redness, itching, irritation, or allergic reactions on the skin. Stability studies indicated that the formulation remained stable under different storage conditions without significant changes in color, odor, pH, consistency, or texture.

VIII. FUTURE PROSPECTIVES

The present research work on herbal face wash formulation provides a strong foundation for future research and development in the field of herbal cosmetics and cosmeceuticals. Due to increasing awareness regarding harmful effects of synthetic cosmetic ingredients, the demand for natural and herbal products is continuously increasing worldwide.

Further research can be carried out to improve the effectiveness, stability, appearance, and therapeutic value of the prepared herbal face wash formulation. Advanced studies can help in commercialization and large-scale industrial production of herbal cosmetic products.

The following future prospects may be considered for further development:

Clinical Evaluation

Clinical studies can be conducted on larger populations to evaluate long-term safety, efficacy, skin compatibility, and consumer acceptance of the herbal face wash formulation.

Development of Formulations for Different Skin Types

Separate herbal face wash formulations may be developed for:

- Oily skin
- Dry skin
- Sensitive skin
- Acne-prone skin
- Combination skin

This may improve product effectiveness according to individual skin requirements.

Addition of Advanced Herbal Ingredients

Additional herbal ingredients and essential oils such as:

- Tea tree oil
- Sandalwood
- Cucumber extract
- Green tea extract
- Orange peel extract
- Charcoal

- Lavender oil

may be incorporated to enhance cosmetic and therapeutic properties.

Anti-Aging and Skin Brightening Studies

Future studies may focus on evaluation of:

- Anti-aging activity
- Anti-wrinkle effects
- Skin whitening activity
- Sun protection effects
- Antioxidant potential

This may increase the market value and therapeutic importance of the product.

Microbiological and Preservative Studies

Further microbiological studies can be performed to determine microbial load and preservative efficacy for improving product shelf life and safety.

Scale-Up and Industrial Production

Pilot-scale and industrial-scale manufacturing studies may be conducted to evaluate production feasibility, quality control parameters, packaging systems, and marketing potential.

Stability Enhancement

Long-term stability studies under different environmental conditions such as temperature, humidity, and light exposure may help improve shelf life and storage conditions of the product.

Eco-Friendly and Herbal Cosmetic Development

Future research may emphasize:

- Natural preservatives
- Biodegradable packaging
- Chemical-free formulations
- Sustainable manufacturing processes

This will support environmentally friendly cosmetic product development.

Commercialization Potential

The prepared herbal face wash formulation has significant commercial potential due to:

- Increasing demand for herbal products
- Consumer preference for natural cosmetics
- Growing awareness regarding skin health
- Rising market for herbal skin care products

The formulation may be developed into a commercially successful herbal cosmetic product after advanced studies and regulatory approval.

The overall study indicates that herbal face wash formulations possess excellent future opportunities in cosmetic, pharmaceutical, and personal care industries due to their safety, effectiveness, affordability, and therapeutic be

References

- [1] Sharma PP. *Cosmetics: Formulation, Manufacturing and Quality Control*. 4th Edition, Vandana Publications, Delhi, India.
- [2] Kokate CK, Purohit AP, Gokhale SB. *Pharmacognosy*. 52nd Edition, Nirali Prakashan, Pune.
- [3] Khandelwal KR. *Practical Pharmacognosy: Techniques and Experiments*. Nirali Prakashan, Pune.
- [4] Mukherjee PK. *Quality Control of Herbal Drugs*. Business Horizons Pharmaceutical Publishers, New Delhi.
- [5] Harborne JB. *Phytochemical Methods: A Guide to Modern Techniques of Plant Analysis*. Chapman and Hall Publications, London.
- [6] Trease GE, Evans WC. *Pharmacognosy*. Saunders Elsevier Publications.
- [7] Remington. *The Science and Practice of Pharmacy*. Lippincott Williams and Wilkins Publications.
- [8] Lachman L, Lieberman HA, Kanig JL. *The Theory and Practice of Industrial Pharmacy*. CBS Publishers and Distributors, New Delhi.
- [9] Indian Herbal Pharmacopoeia. Indian Drug Manufacturers Association, Mumbai.
- [10] Jain NK. *Pharmaceutical Product Development and Cosmetic Technology*. CBS Publishers and Distributors.
- [11] Balsam MS, Sagarin E. *Cosmetics Science and Technology*. Wiley Interscience Publications.

- [12] Ashawat MS, Saraf S, Saraf S. Herbal Cosmetics: Trends in Skin Care Formulation. *Pharmacognosy Reviews*.
- [13] Kapoor VP. Herbal Cosmetics for Skin and Hair Care. *Natural Product Radiance*.
- [14] Ali SM, Yosipovitch G. Skin pH: From Basic Science to Basic Skin Care. *Acta Dermato-Venereologica*.
- [15] Bedi MK, Shenefelt PD. Herbal Therapy in Dermatology. *Archives of Dermatology*.
- [16] Indian Pharmacopoeia. Government of India, Ministry of Health and Family Welfare.
- [17] Chanchal D, Swarnlata S. Novel Approaches in Herbal Cosmetics. *Journal of Cosmetic Dermatology*.
- [18] Khare CP. *Indian Medicinal Plants: An Illustrated Dictionary*. Springer Publications.
- [19] Mithal BM. *A Textbook of Forensic Pharmacy*. National Book Centre Publications.
- [20] Sharma RK, Dash B. *Charaka Samhita*. Chowkhamba Sanskrit Series Office, Varanasi.
- [21] Kirtikar KR, Basu BD. *Indian Medicinal Plants*. International Book Distributors, Dehradun.
- [22] Meena AK, Rao MM. Evaluation of Herbal Cosmetic Preparations. *International Journal of Pharmaceutical Sciences*.
- [23] Baveja SK. *Textbook of Cosmetics*. CBS Publishers and Distributors, New Delhi.
- [24] Kumar S, Malhotra R, Kumar D. Evaluation of Herbal Face Wash Formulations. *Asian Journal of Pharmaceutical Research*.
- [25] Gupta P, Jain S. Formulation and Evaluation of Polyherbal Face Wash Gel. *International Journal of Drug Development and Research*.
- [26] Singh HP, Udupa SL. Studies on Herbal Skin Care Preparations. *Indian Journal of Pharmaceutical Education and Research*.
- [27] Chaudhary GD, Goyal S, Polonia P. Laws onia interims Linnaeus: A Phytopharmacological Review. *International Journal of Pharmaceutical Sciences and Drug Research*.
- [28] Draelos ZD. Cosmetics and Skin Care Products. *Dermatologic Clinics*.
- [29] Harry RG. *Harry's cosmetic ology*. Chemical Publishing Company, New York.
- [30] Shah RN, Methal BM. *A Handbook of Cosmetics*. Vallabh Prakashan, Delhi.